

TPHA TYPE

SMD POWER INDUCTOR

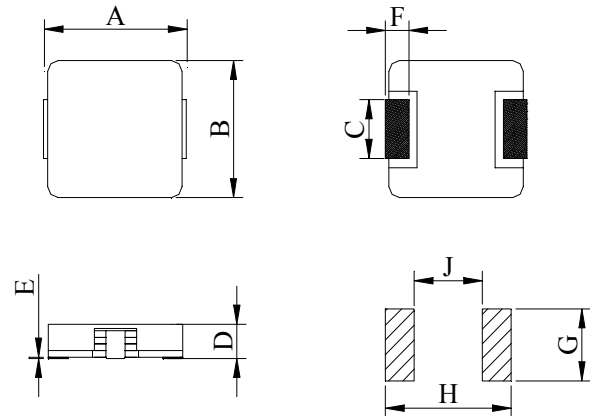


FEATURE:

- Magnetically shielded for low radiation.
- High saturation current.
- Low DC resistance and low profile.
- High temperature application environment.

SHAPES&DIMENSION:

Unit:mm



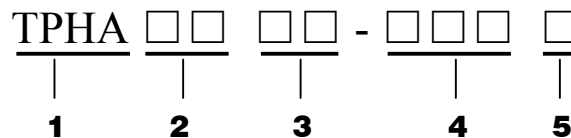
APPLICATION

- Ideal for very high current DC/DC converter output chokes
- High current DC/DC converter used with low voltage micro-processor controllers
- High -density,tight-board space designs
- High-speed notebook computers
- Video game machines
- Low-profile/high-current power supplies

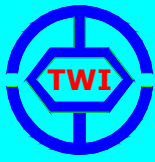
| Part No. | A | B | C | D |
|-----------|-----------|-----------|---------|----------|
| TPHA 6644 | | | | |
| TPHA 1045 | 10.6±0.50 | 10.0±0.30 | 1.75REF | 4.8±0.50 |
| TPHA 1237 | 13.0±0.50 | 12.7±0.30 | 2.4REF | 3.9±0.50 |
| TPHA 1243 | 13.0±0.50 | 12.7±0.30 | 2.4REF | 4.5±0.50 |
| TPHA 1272 | 13.0±0.50 | 12.7±0.40 | 2.4REF | 7.80MAX |

| Part No. | E | F | G | H | J |
|-----------|---------|--------|-----|------|-----|
| TPHA 6644 | | 2.0REF | 3.2 | 8.0 | 3.0 |
| TPHA 1045 | 0.10MIN | 2.5REF | 3.5 | 11.5 | 4.0 |
| TPHA 1237 | 0.10MIN | 3.0REF | 4.2 | 14.0 | 5.0 |
| TPHA 1243 | 0.10MIN | 3.0REF | 4.2 | 14.0 | 5.0 |
| TPHA 1272 | 0.03MIN | 3.0REF | 4.2 | 14.0 | 5.0 |

PART NUMBERING SYSTEM:



- 1) PRODUCT SYMBOL
- 2) OUTSIDE DIA :m/m
- 3) BODY HEIGHT :m/m
- 4) INDUCTANCE :μH
- 5) TOLERANCE :K 10%, L 15%, M 20%



TPHB TYPE

SMD POWER INDUCTOR

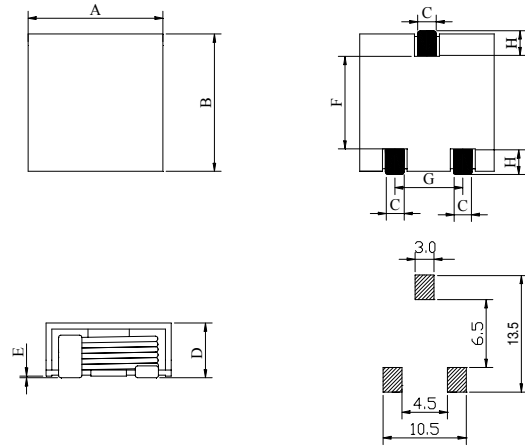


FEATURE:

- Magnetically shielded for low radiation.
- High saturation current.
- Low DC resistance and low profile.
- High temperature application environment.

SHAPES&DIMENSION:

Unit:mm



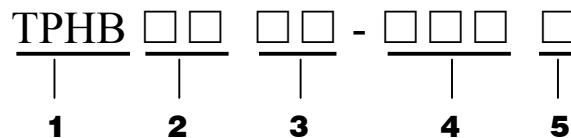
APPLICATION

- Ideal for very high current DC/DC converter output chokes
- High current DC/DC converter used with low voltage micro-processor controllers
- High -density,tight-board space designs
- High-speed notebook computers
- Video game machines
- Low-profile/high-current power supplies

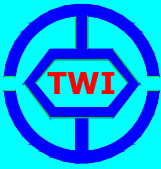
| Part No. | A | B | C | D |
|-----------|-----------|-----------|--------|----------|
| TPHB 1247 | 12.7±0.30 | 13.0±0.30 | 2.4REF | 5.0±0.50 |

| Part No. | E | F | G | H |
|-----------|--------|---------|----------|--------|
| TPHB 1247 | 0.1MIN | 6.70REF | 7.5±0.30 | 3.2REF |

PART NUMBERING SYSTEM:



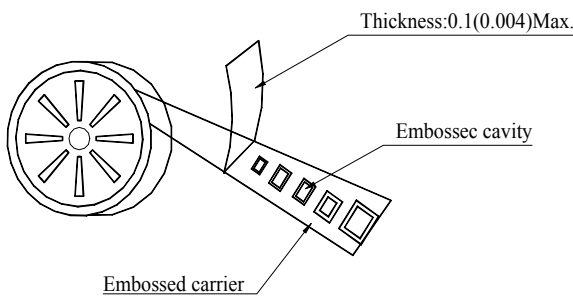
- 1) PRODUCT SYMBOL
- 2) OUTSIDE DIA :m/m
- 3) BODY HEIGHT :m/m
- 4) INDUCTANCE :μH
- 5) TOLERANCE :K 10%, L 15%, M 20%



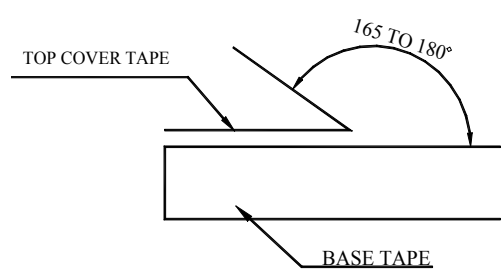
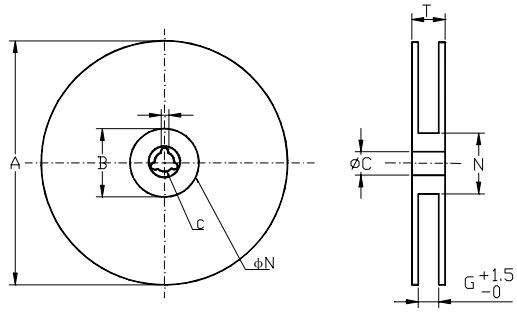
TPHA/B TYPE

SMD POWER INDUCTOR

PACKAGING FOR SMC



CARRIER TAPE REELS

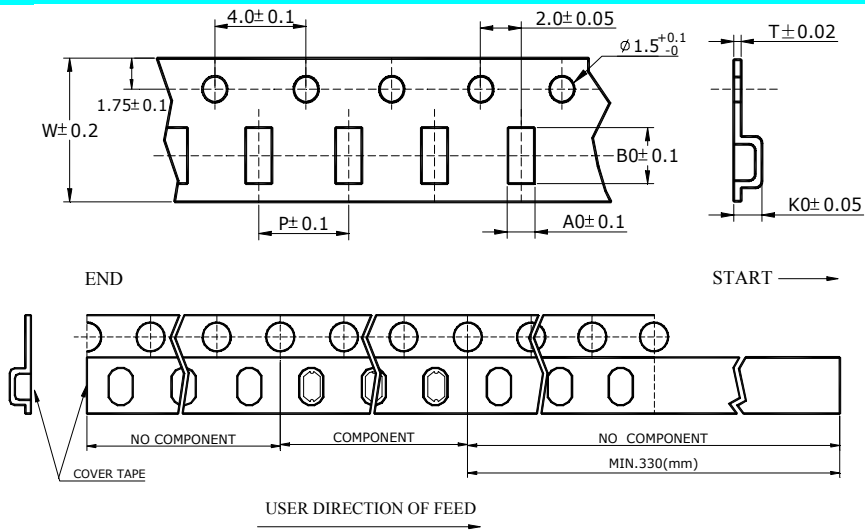


The force for tearing off cover tape is 10 to 60 grams in the arrow direction.

MATERIAL:PAPER/PLASTIC Dimension in mm

| TYPE | A | B | C | G | N | T |
|------|-----|----------|----------|------|-----|------|
| 8mm | 178 | 21.0±0.8 | 13.0±0.2 | 8.4 | 55 | 12.4 |
| 12mm | 178 | 21.0±0.8 | 13.0±0.2 | 12.4 | 55 | 16.4 |
| 16mm | 178 | 21.0±0.8 | 13.0±0.2 | 16.4 | 55 | 20.4 |
| 24mm | 178 | 21.0±0.8 | 13.0±0.2 | 24.4 | 100 | 28.4 |
| 12mm | 330 | 21.0±0.8 | 13.0±0.2 | 12.4 | 100 | 16.4 |
| 16mm | 330 | 21.0±0.8 | 13.0±0.2 | 16.4 | 100 | 20.4 |
| 24mm | 330 | 21.0±0.8 | 13.0±0.2 | 24.4 | 100 | 28.4 |
| 24mm | 330 | 21.0±0.8 | 13.0±0.2 | 24.4 | 75 | 28.4 |
| 32mm | 330 | 21.0±0.8 | 13.0±0.2 | 32.4 | 75 | 36.4 |

TAPE DIMENSION/PACKAGING



| TYPE | A0 | B0 | K0 | W | P | T | CHIPS/REEL | Dimension in mm |
|----------|----|----|----|---|---|---|------------|-----------------|
| TPHA6644 | | | | | | | | |
| TPHA1045 | | | | | | | | |
| TPHA1237 | | | | | | | | |
| TPHA1243 | | | | | | | | |
| TPHA1272 | | | | | | | | |
| TPHB1247 | | | | | | | | |
| | | | | | | | | |
| | | | | | | | | |