

TCPR TYPE

SMD POWER INDUCTOR

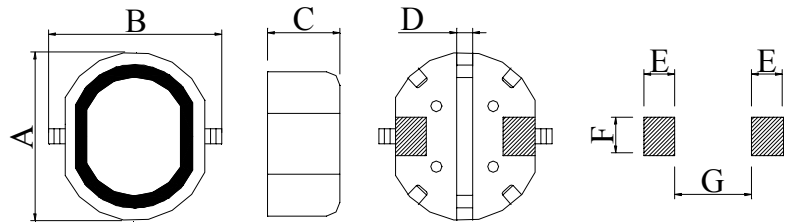


FEATURE:

- Magnetic shielded for low radiation.
- Ferrite bobbin core and compact size.
- Low core loss for high frequency power application.
- Excellent solderability and high heat resistance.

SHAPES&DIMENSION:

Unit:mm

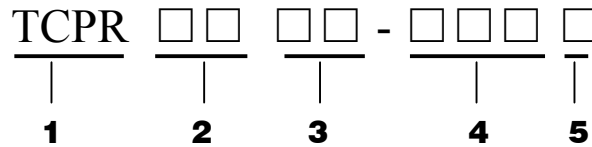


APPLICATION

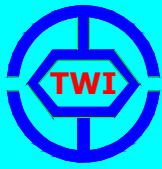
- Various kinds of OA equipment
- Battery powered equipment
- DC/DC converter
- Digital equipment
- Cellular telephone

Part No.	A	B	C	D	E	F	G
TCPR 0704	7.80±0.30	10.5MAX	4.60±0.30	1.0	2.0	3.3	3.5
TCPR 0705	7.80±0.30	10.5MAX	5.20±0.30	1.0	2.0	3.3	3.5
TCPR 1004	10.00±0.30	11.5MAX	4.60±0.30	1.6	2.3	3.5	4.5
TCPR 1005	10.00±0.30	11.5MAX	5.20±0.30	1.6	2.3	3.5	4.5
TCPR 1204	12.60±0.30	14.0MAX	4.60±0.30	2.1	2.5	3.5	4.5
TCPR 1205	12.60±0.30	14.0MAX	5.20±0.30	2.1	2.5	3.5	4.5

PART NUMBERING SYSTEM:



- 1) PRODUCT SYMBOL
- 2) OUTSIDE DIA :m/m
- 3) BODY HEIGHT :m/m
- 4) INDUCTANCE :μH
- 5) TOLERANCE :K 10%, L 15%, M 20%



TCPR TYPE

SMD POWER INDUCTOR

STANDARD SPECIFICATION

Part Inductance		DCR(Ω)Max.						Rated D.C. Current(A)Max.					
No.	L(μ H)	TCPR 0704	TCPR 0705	TCPR 1004	TCPR 1005	TCPR 1204	TCPR 1205	TCPR 0704	TCPR 0705	TCPR 1004	TCPR 1005	TCPR 1204	TCPR 1205
1R0	1.0		0.04						3.25				
1R2	1.2		0.05						2.95				
1R5	1.5		0.06						2.70				
1R8	1.8		0.07						2.30				
2R2	2.2		0.08						2.00				
2R7	2.7		0.09	0.070				1.80	2.30				
3R3	3.3		0.10	0.081				1.60	2.00				
3R9	3.9		0.11	0.088				1.50	1.80				
4R7	4.7		0.12	0.100				1.30	1.60				
5R6	5.6		0.13	0.120	0.070			1.20	1.50	2.38			
6R8	6.8		0.16	0.151	0.081			1.10	1.30	2.13			
8R2	8.2		0.18	0.170	0.088	0.070		1.00	1.20	1.87	2.38		
100	10	0.07	0.24	0.199	0.100	0.081	0.08	1.65	0.94	1.10	1.73	2.13	2.60
120	12	0.07	0.28	0.223	0.120	0.088	0.09	1.57	0.85	1.00	1.60	1.87	2.45
150	15	0.08	0.37	0.252	0.151	0.100	0.10	1.39	0.78	0.94	1.44	1.73	2.27
180	18	0.10	0.43	0.344	0.170	0.120	0.11	1.29	0.72	0.85	1.26	1.60	2.15
220	22	0.13	0.47	0.399	0.199	0.151	0.12	1.12	0.66	0.78	1.20	1.44	1.95
270	27	0.16	0.64	0.544	0.223	0.170	0.14	1.06	0.58	0.72	1.10	1.26	1.76
330	33	0.18	0.71	0.621	0.252	0.199	0.17	0.97	0.51	0.66	1.01	1.20	1.50
390	39	0.18	0.96	0.721	0.344	0.223	0.19	0.91	0.49	0.58	0.91	1.10	1.37
470	47	0.27	1.11	0.949	0.399	0.252	0.22	0.80	0.42	0.51	0.85	1.01	1.28
560	56	0.29	1.26	1.100	0.544	0.344	0.25	0.76	0.40	0.49	0.74	0.91	1.17
680	68	0.33	1.59	1.245	0.621	0.399	0.35	0.68	0.36	0.42	0.69	0.85	1.11
820	82	0.43	1.83	1.526	0.721	0.544	0.40	0.62	0.34	0.40	0.61	0.74	1.00
101	100	0.49		1.936	0.949	0.621	0.47	0.55		0.36	0.56	0.69	0.97
121	120	0.68		2.315	1.100	0.721	0.63	0.49		0.34	0.53	0.61	0.89
151	150	0.94			1.245	0.949	0.73	0.44			0.45	0.56	0.78
181	180	1.00			1.526	1.100	0.97	0.40			0.42	0.53	0.72
221	220	1.18			1.904	1.245	1.15	0.36			0.38	0.45	0.66
271	270	1.30			2.263	1.526	1.30	0.33			0.35	0.42	0.57
331	330				2.591	1.904	1.48				0.32	0.38	0.52
391	390				2.263	1.90					0.35	0.48	
471	470				2.591	2.25					0.32	0.42	
561	560					2.55						0.33	
681	680					2.81						0.28	
821	820					3.15						0.24	

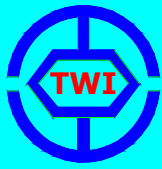
1. Test Freq.(L)

1.0~8.2 μ H(7.96MHz/0.25V); 10~82 μ H(2.52MHz/0.25V); 100~820 μ H(1KHz/0.25V);

2. Tolerance of Inductance: 1.0~820 μ H \pm 20%(M);

3. Operating temperature-45 $^{\circ}$ C to +85 $^{\circ}$ C.

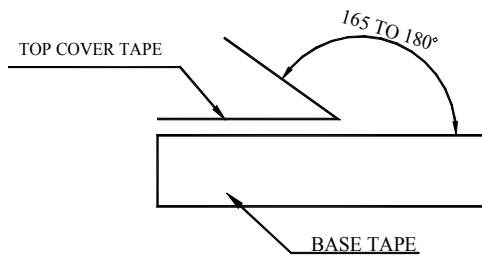
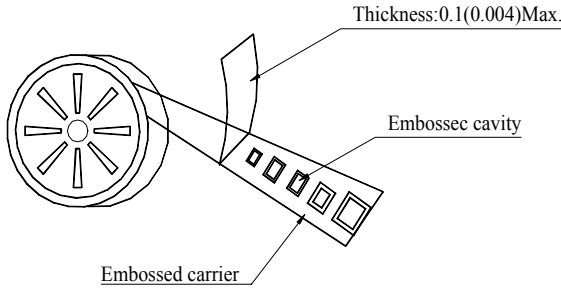
4. Current to cause maximum 10% of inductance drop, or 40 $^{\circ}$ C temperature rise.



TCPR TYPE

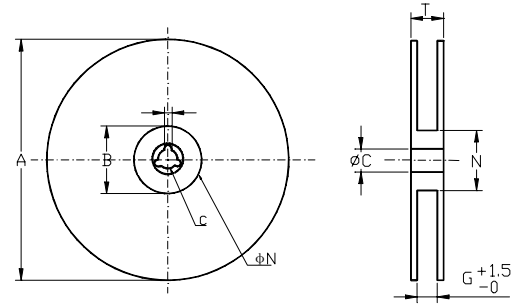
SMD POWER INDUCTOR

PACKAGING FOR SMC



The force for tearing off cover tape is 10 to 60 grams in the arrow direction.

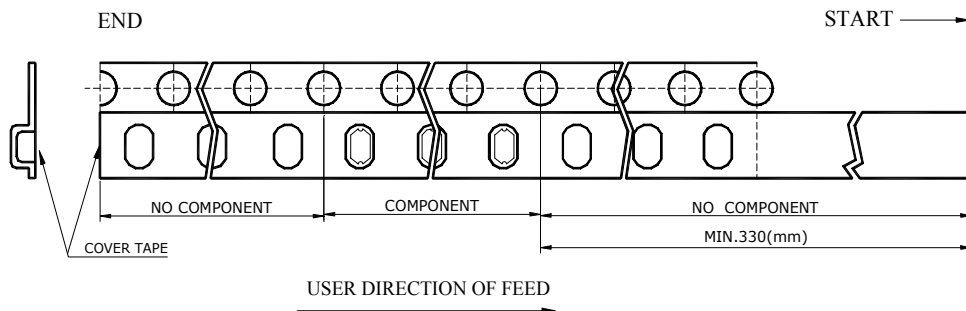
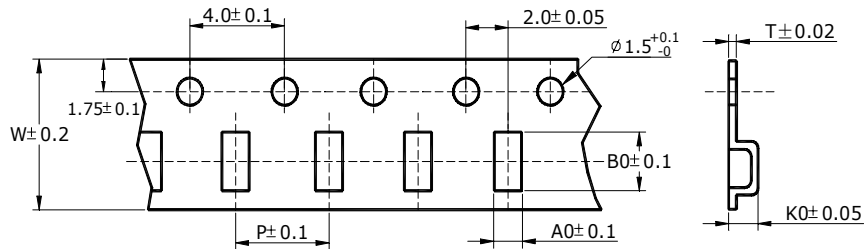
CARRIER TAPE REELS



MATERIAL: PAPER/PLASTIC Dimension in mm

TYPE	A	B	C	G	N	T
8mm	178	21.0±0.8	13.0±0.2	8.4	55	12.4
12mm	178	21.0±0.8	13.0±0.2	12.4	55	16.4
16mm	178	21.0±0.8	13.0±0.2	16.4	55	20.4
24mm	178	21.0±0.8	13.0±0.2	24.4	100	28.4
12mm	330	21.0±0.8	13.0±0.2	12.4	100	16.4
16mm	330	21.0±0.8	13.0±0.2	16.4	100	20.4
24mm	330	21.0±0.8	13.0±0.2	24.4	100	28.4
24mm	330	21.0±0.8	13.0±0.2	24.4	75	28.4
32mm	330	21.0±0.8	13.0±0.2	32.4	75	36.4

TAPE DIMENSION/PACKAGING



TYPE	A0	B0	K0	W	P	T	CHIPS/REEL
TCPR0704	7.60	8.30	5.50	16.0	12.0	0.40	1000
TCPR0705	7.60	8.30	5.50	16.0	12.0	0.40	1000
TCPR1004	10.10	10.40	5.80	24.0	16.0	0.10	1000
TCPR1005	10.10	10.40	5.80	24.0	16.0	0.10	500
TCPR1204	12.00	13.00	6.20	24.0	16.0	0.10	300
TCPR1205	12.00	13.00	6.20	24.0	16.0	0.10	300

Dimension in mm