

TBRI TYPE

SMD POWER INDUCTOR

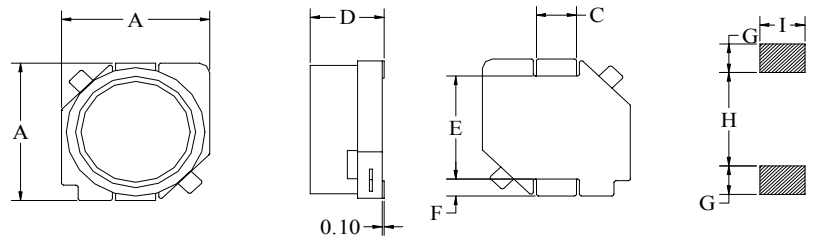


FEATURE:

- The TBRI series are characterized by low profile, low DC resistance, and high current handling capacities.
- Because they are magnetically shielded these parts can be used in high-density mounting configurations.
- Flat bottom surface ensures secure, reliable mounting.
- Provided in embossed carrier tape packaging.

SHAPES&DIMENSION:

Unit:mm

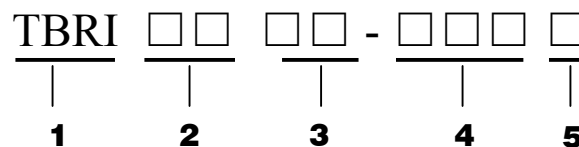


APPLICATION

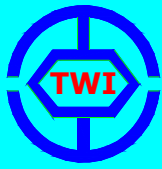
- DC/DC converter
- Camcorder
- LCD TV
- MP3-player
- Digital camera
- G.P.S
- Portable CDR-W
- PDA(desktop)
- Portable telephones
- Hard disk drives

Part No.	A	D	C	E	F	G	H	I
TBRI 6025	6.0±0.20	2.5±0.20	2.0±0.10	4.0tpy	0.9	1.5	4.0	2.2
TBRI 6028	6.0±0.20	2.8±0.20	2.0±0.10	4.0tpy	0.9	1.5	4.0	2.2
TBRI 7028	7.0±0.20	2.8±0.20	2.0±0.10	4.9tpy	0.9	1.5	4.9	2.2
TBRI 7030	7.0±0.20	3.0±0.20	2.0±0.10	4.9tpy	0.9	1.5	4.9	2.2
TBRI 7032	7.0±0.20	3.2±0.20	2.0±0.10	4.9tpy	0.9	1.5	4.9	2.2
TBRI 7045	7.0±0.20	4.5±0.30	2.0±0.10	4.9tpy	0.9	1.5	4.9	2.2
TBRI 10145	10.1±0.30	4.5±0.30	3.0±0.10	5.0±0.20	2.0±0.15	2.5	5.8	2.2
TBRI 12555	12.5±0.30	5.5±0.30	3.0±0.10	8.6±0.30	2.0±0.15	2.5	8.60	3.2
TBRI 12565	12.5±0.30	6.5±0.30	3.0±0.10	8.6±0.30	2.0±0.15	2.5	8.60	3.2
TBRI 12575	12.5±0.30	7.5±0.30	3.0±0.10	8.6±0.30	2.0±0.15	2.5	8.60	3.2

PART NUMBERING SYSTEM:



- 1) PRODUCT SYMBOL
- 2) OUTSIDE DIA :m/m
- 3) BODY HEIGHT :m/m
- 4) INDUCTANCE :μH
- 5) TOLERANCE :K 10%, L 15%, M 20%



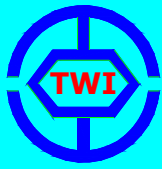
TBRI TYPE

SMD POWER INDUCTOR

STANDARD SPECIFICATION

Part No.	Inductance L(μH)	DCR(Ω)±20%.										Rated D.C. Current(A)Max.									
		TBRI 6025	TBRI 6028	TBRI 7028	TBRI 7030	TBRI 7032	TBRI 7045	TBRI 10145	TBRI 12555	TBRI 12565	TBRI 12575	TBRI 6025	TBRI 6028	TBRI 7028	TBRI 7030	TBRI 7032	TBRI 7045	TBRI 10145	TBRI 12555	TBRI 12565	TBRI 12575
1R2	1.2									0.0069											8.2
2R0	2									0.0117											6.2
2R7	2.7									0.0094											7.0
3R3	3.3			0.037	0.023	0.023	0.020							1.60	1.80	1.90	2.5				
3R9	3.9									0.0104											6.7
4R2	4.2									0.0150											5.5
4R7	4.7	0.0306	0.0284	0.045	0.036	0.036	0.030						1.50	1.60	1.50	1.60	1.70	2.0			
5R6	5.6									0.0116											6.3
6R0	6									0.0164											3.60
6R8	6.8	0.0442	0.0354	0.059	0.041	0.041	0.039			0.0131			1.30	1.50	1.30	1.50	1.60	1.7			5.9
7R0	7.0									0.0177											5.0
100	10	0.0573	0.0532	0.083	0.053	0.053	0.036	0.0384	0.0215	0.0202	0.0156	1.00	1.30	1.10	1.30	1.40	1.3	2.5	3.40	4.8	5.4
150	15	0.085	0.0745	0.130	0.084	0.075	0.052	0.0472	0.0259	0.0237	0.0184	0.88	1.00	0.88	1.00	1.10	1.1	2.2	2.80	4.2	4.7
220	22	0.122	0.104	0.180	0.110	0.11	0.061	0.0591	0.0338	0.0316	0.0263	0.73	0.77	0.75	0.86	0.96	0.9	1.9	2.30	3.5	4.0
330	33	0.180	0.148	0.240	0.160	0.16	0.096	0.0815	0.0415	0.0406	0.0395	0.59	0.69	0.65	0.65	0.75	0.82	1.6	1.90	2.8	3.2
470	47	0.240	0.210	0.340	0.240	0.24	0.125	0.10	0.0618	0.0578	0.0528	0.48	0.59	0.54	0.57	0.67	0.75	1.4	1.60	2.4	2.7
680	68	0.370	0.290		0.310	0.31	0.175	0.14	0.0832	0.0787	0.0778	0.42	0.50		0.49	0.59	0.60	1.2	1.30	2.0	2.0
101	100	0.500	0.430		0.450	0.45	0.250	0.20	0.117	0.123	0.1250	0.33	0.42		0.35	0.45	0.50	1.0	1.10	1.6	1.9
151	150					0.65	0.340	0.35	0.190		0.1750					0.37	0.40	0.79	0.88		1.5
221	220					1.05	0.520	0.47	0.270	0.273	0.2580					0.29	0.33	0.65	0.72	1.0	1.3
331	330					1.67	0.740	0.68	0.410							0.22	0.25	0.54	0.59		
471	470					2.05	1.050	1.03	0.520							0.20	0.22	0.47	0.49		
681	680					3.15	1.480	1.50	0.760							0.16	0.20	0.38	0.43		
102	1000					4.78	2.280	2.80	1.120							0.13	0.14	0.29	0.34		
152	1500							3.40	1.730									0.22	0.29		

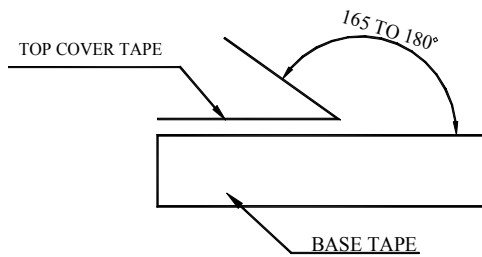
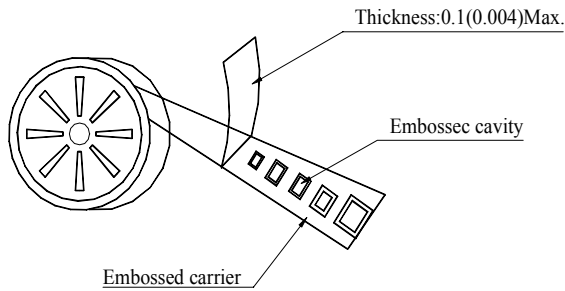
1. Test Freq.(L): 1KHz 0.25V;
2. Tolerance of Inductance: 1.2~1500μH±20%(M)
3. Operating temperature -40°C to +85°C.
4. Rated current: Value obtained when current flows and the temperature has risen to 25°C or when DC current flows and the initial value of inductance has fallen by 30%, which is smaller.



TBRI TYPE

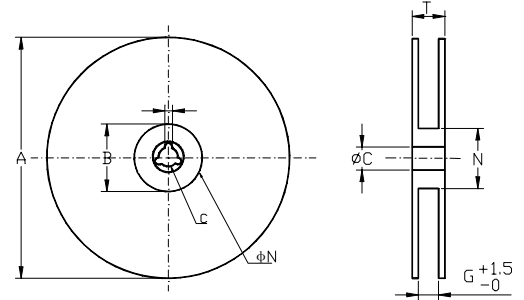
SMD POWER INDUCTOR

PACKAGING FOR SMC



The force for tearing off cover tape is 10 to 60 grams in the arrow direction.

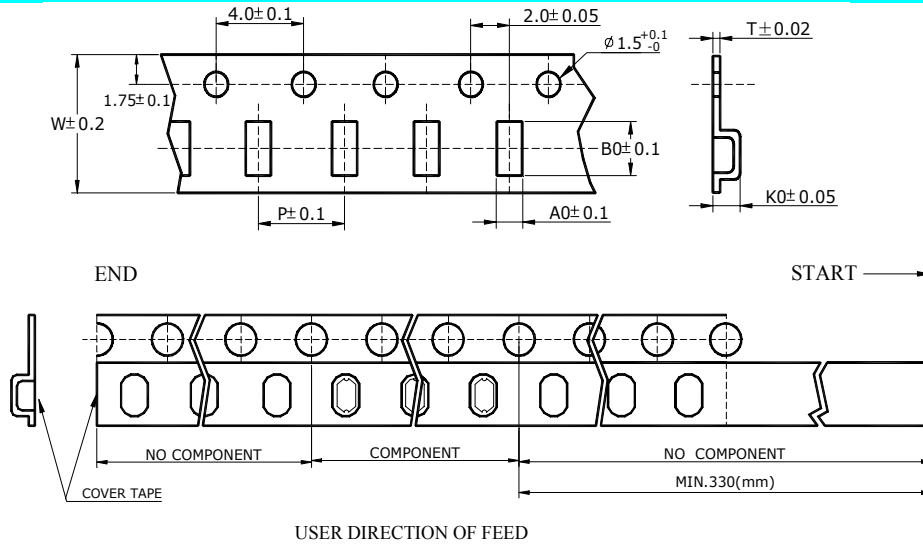
CARRIER TAPE REELS



MATERIAL: PAPER/PLASTIC Dimension in mm

TYPE	A	B	C	G	N	T
8mm	178	21.0±0.8	13.0±0.2	8.4	55	12.4
12mm	178	21.0±0.8	13.0±0.2	12.4	55	16.4
16mm	178	21.0±0.8	13.0±0.2	16.4	55	20.4
24mm	178	21.0±0.8	13.0±0.2	24.4	100	28.4
12mm	330	21.0±0.8	13.0±0.2	12.4	100	16.4
16mm	330	21.0±0.8	13.0±0.2	16.4	100	20.4
24mm	330	21.0±0.8	13.0±0.2	24.4	100	28.4
24mm	330	21.0±0.8	13.0±0.2	24.4	75	28.4
32mm	330	21.0±0.8	13.0±0.2	32.4	75	36.4

TAPE DIMENSION/PACKAGING



TYPE	A0	B0	K0	W	P	T	CHIPS/REEL	Dimension in mm
TBRI 6025	6.5	6.5	3.20	16.0	16.0	0.40	1000	
TBRI 6028	6.5	6.5	3.50	16.0	16.0	0.40	1000	
TBRI 7028	7.8	7.8	3.65	16.0	16.0	0.40	1000	
TBRI 7030	7.8	7.8	3.85	16.0	16.0	0.40	1000	
TBRI 7032	7.8	7.8	4.05	16.0	16.0	0.40	1000	
TBRI 7045	7.8	7.8	5.35	16.0	16.0	0.40	1000	
TBRI 10145	10.8	10.8	5.35	24.0	20.0	0.40	500	
TBRI 12555	13.2	13.2	5.45	24.0	20.0	0.40	500	
TBRI 12565	13.2	13.2	5.55	24.0	20.0	0.40	500	
TBRI 12575	13.2	13.2	5.65	24.0	20.0	0.40	500	